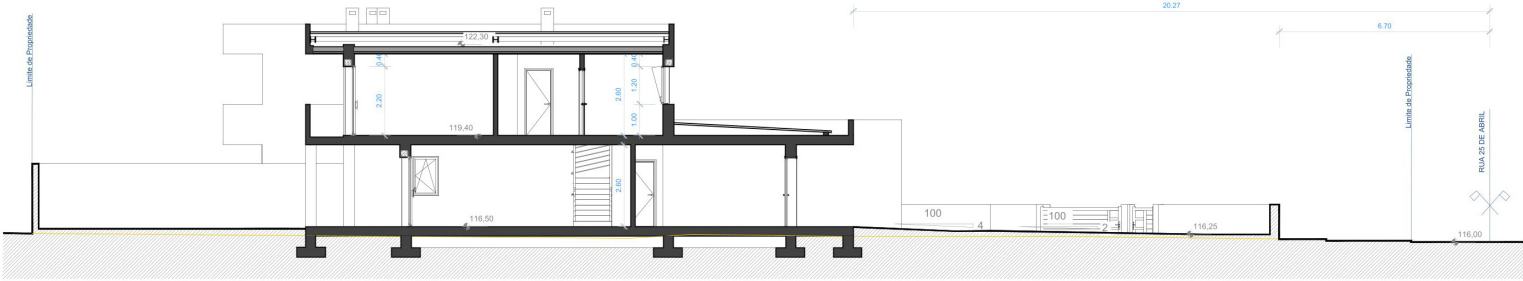
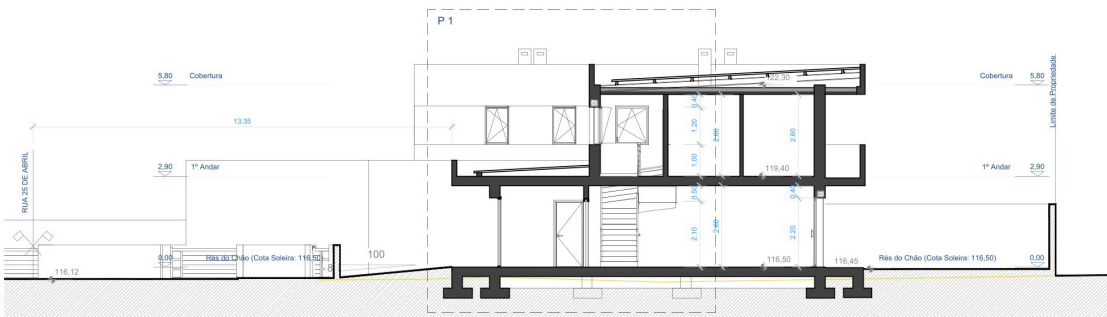


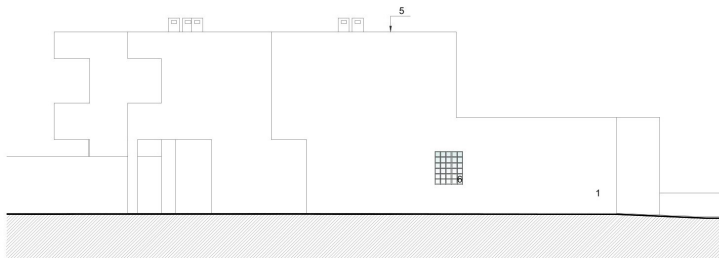
CORTE 1



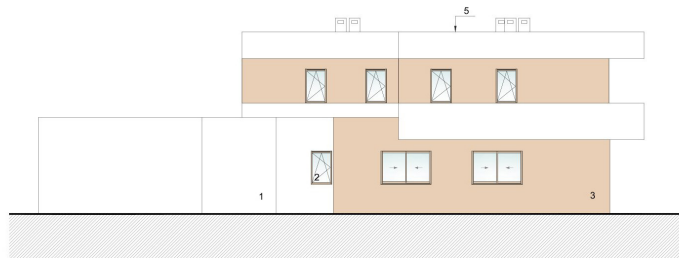
CORTE 3



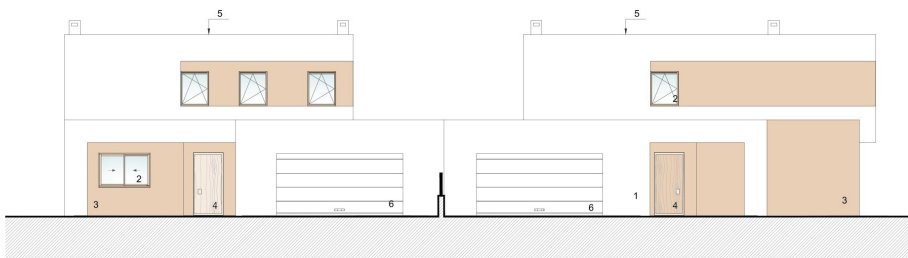
CORTE 2



ALÇADO LAT. ESQUERDO - NASCENTE



ALÇADO LAT. DIREITO - POENTE



ALÇADO PRINCIPAL - NORTE



ALÇADO POSTERIOR - SUL



MAPA DE ACABAMENTOS

1	PAREDE REBOCADA LISA À COR	BRANCO
2	CAIXILHARIA EM ALUMÍNIO - VIDRO	CASTANHO BRONZE
3	PAREDE REBOCADA - FASSA BORTOLO "RICORDI STUCCO" FORME PLASMATE	OCRE (RS14)
4	PORTA BLINDADA - REVESTIDA A VINIL	CARVALHO
5	TELHADO - "SANDUICHE"	BRANCO
6	PORTÃO PVC - SEGURANTADO	BRANCO
7	TUJILLO DE VIDRO - CFRP	OPALINO

CORES

